



# Mid-Terraced House

388 Kingsway, Davyhulme

Tel: 01565 831132

[Sales@msapropertyservices.com](mailto:Sales@msapropertyservices.com)

**msa**

property services

# Mid-Terraced house

Mid-terraced house offering good sized accommodation comprising three bedrooms, family bathroom, lounge, dining room and well-presented kitchen. The property also benefits from a gas central heating system, double glazing, front and rear garden areas. Partly furnished.

## Accommodation:

Porch: Entrance uPVC front door with double glazed inset, uPVC double glazed window panel to side. Gas and electric meters

Hallway: Single radiator, stairs to first floor, double doors into: Lounge 15'1" max. x 11'9", uPVC double glazed window to front, single radiator, dado rail. Fire surround with tiled inset and hearth.

Dining Room 9'9" x 9'4", uPVC double glazed window to rear, uPVC door to rear garden. Under stairs storage cupboard, single radiator, dado rail.

Kitchen 11'2" max. x 8'0" max., uPVC double glazed window to rear. Range wall and base units with rolled work surface, integrated electric oven, electric hob with extractor hood over, stainless steel sink. Tiled splash backs.

First Floor Landing: Loft access, built in storage cupboard.

Bedroom One 10'5" max. (excluding doorway) x 13'2" max., uPVC double glazed window to front, single radiator.

Bedroom Two 11'9" max. x 9'11" max., uPVC double glazed window to rear, single radiator.

Bedroom Three 8'9" max. x 7'6", uPVC double glazed window to front, single radiator, wall mounted 'Ferrolí' combi boiler.

Bathroom: uPVC double glazed window to rear, tiled walls. Low level W.C., pedestal hand washbasin, bath with mixer taps and shower hose.

Outside Front: To the front is an enclosed garden with borders.

Outside Rear: Double Car driveway.



Tel: 01565 831132

Sales@msapropertyservices.com

**msa**

property services



**£ 265,000**

**Address: 388 Kingsway**

**City: Davyhulme**

**Area: Greater Manchester**

**Country: UK**

**Property Id: 20339**



**Property Size: 83 m2**



**Bedrooms: 3**



**Bathrooms: 1**



**Floors No: 2**



Tel: 01565 831132

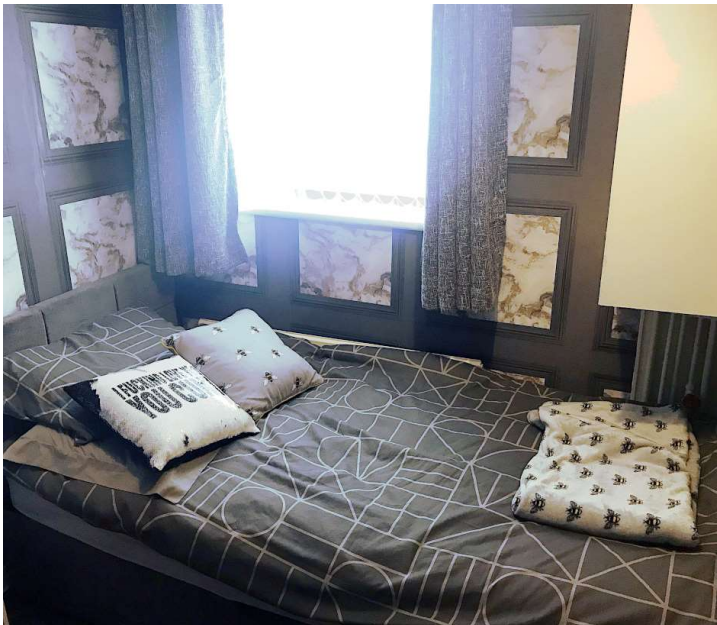
Sales@msapropertyservices.com

**msa**

**property services**

## Features

- Double glazing
- Gas central heating
- Equipped kitchen
- Front garden
- Laminate flooring





## Contact us

msa property services

Tel: +44 1565 8311 32

[sales@msapropertyservices.com](mailto:sales@msapropertyservices.com)

The Cow Shed  
Walnut Tree Farm  
Lower Stretton  
Cheshire  
WA4 4PG

Tel: 01565 831132

[Sales@msapropertyservices.com](mailto:Sales@msapropertyservices.com)



**msa**

property services